

# **CABINETS***express*

## **KITCHEN DESIGN SURVEY & MEASURING GUIDE**

Welcome to the Cabinets Express Design Survey & Measuring Guide. A new kitchen design featuring one of our high quality, 100% all wood cabinet styles is only a few short steps away. With Cabinets Express, you get your kitchen designed YOUR WAY. Therefore how you use this guide will depend on which of our convenient design methods you choose...

## **DESIGN IT YOUR WAY**



### **WE DESIGN IT**

Take advantage of our FREE express computerized design service. All you have to do is completely fill out the Design Survey, follow the simple instructions to measure your room, and submit all the information to us using one of the convenient methods shown below.



### **YOU DESIGN IT**

Our online kitchen design software is easy to use and saves you time. If you'd like to design your own kitchen, you may choose to forego the enclosed Design Survey, and only follow the simple instructions to measure your room. Input your room measurements into the online design software, and you'll be ready to layout and order your kitchen in no time!

## **SEND IT YOUR WAY**



### **E-MAIL**

Scan to PDF or JPEG file format and send attachment to [Design@CabinetsExpress.com](mailto:Design@CabinetsExpress.com)



### **FAX**

631-563-9864 ATTN: Cabinets Express Design Central



### **MAIL**

717 Broadway Ave. Holbrook, NY 11741 ATTN: Cabinets Express Design Central

## **IT'S YOUR KITCHEN, HAVE IT YOUR WAY!**

# KITCHEN DESIGN SURVEY

Please take a few moments to complete the enclosed design survey which will help us identify your specific kitchen requirements and wishes. After you submit this survey and your measurements, our team of accredited design specialists will create a kitchen design that is functional, elegant, and reflects the precise needs of you and your family.

## A PERSONAL CONTACT INFORMATION

**Sell To:**

**Deliver To:**

Name: \_\_\_\_\_

Name: \_\_\_\_\_

Address: \_\_\_\_\_

Address: \_\_\_\_\_

City: \_\_\_\_\_ State: \_\_\_\_\_ Zip: \_\_\_\_\_

City: \_\_\_\_\_ State: \_\_\_\_\_ Zip: \_\_\_\_\_

Telephone: \_\_\_\_\_ Best Contact Time: \_\_\_\_\_

Telephone: \_\_\_\_\_

E-Mail: \_\_\_\_\_

Cross Street: \_\_\_\_\_

## B GENERAL INFORMATION

- Number of people in your family? Adults: \_\_\_\_\_ Children: \_\_\_\_\_ Seniors: \_\_\_\_\_
- The primary cook is .....Right Handed  Left Handed
- How often do you entertain? .....Frequently  Moderately
- How does the family use the kitchen?.....Daily Full Course "From Scratch" Meals  Daily Heat & Serve Meals   
Weekend Quantity Cooking  Weekend Family Meals

## C APPLIANCES & FIXTURES

Knowing the sizes of the appliances you plan on using in your kitchen is essential to creating a functional design. Please provide the information below as completely as possible, but at the very least be sure to include appliance sizes.

- Range: Free Standing  Slide-In  Drop-In  Commercial  Dimensions (WxDxH) \_\_\_\_\_
- Cooktop: Range Top  Drop-In  Dimensions (WxDxH) \_\_\_\_\_
- Wall Oven: Single  Double  Combo  Dimensions (WxDxH) \_\_\_\_\_
- Range Hood: Vented  Recirculating  Dimensions (WxDxH) \_\_\_\_\_
- Microwave: Built-In  Over Range  Countertop  Dimensions (WxDxH) \_\_\_\_\_
- Dishwasher: Built-In  Portable  Dimensions (WxDxH) \_\_\_\_\_
- Refrigerator: Built-In  Top Freezer  Bottom Freezer  Side by Side  Dimensions (WxDxH) \_\_\_\_\_
- Freezer: Chest  Free Standing  Dimensions (WxDxH) \_\_\_\_\_
- Trash Compactor: Built-In  Free Standing  Dimensions (WxDxH) \_\_\_\_\_
- Wine Chiller: Built-In  Free Standing  Dimensions (WxDxH) \_\_\_\_\_
- Sink: Single Bowl  Double Bowl  Triple Bowl  Farmhouse  Dimensions (WxDxH) \_\_\_\_\_
- Miscellaneous: Please provide the types and dimensions for any other appliances you plan on using in you new kitchen.  
\_\_\_\_\_

## D STRUCTURAL & LAYOUT PREFERENCES

Are there any planned structural changes to your kitchen?

1. Are you willing to replace or relocate the windows?.....Yes  No
2. Are you willing to replace or relocate the doors?.....Yes  No
3. Which type of flooring are you planning on using?.....Wood  Ceramic Tile  Vinyl

In order to provide the best possible layout for your new kitchen:

4. Are you willing to relocate the refrigerator?.....Yes  No
5. Are you willing to relocate the range?.....Yes  No
6. Are you willing to relocate the sink?.....Yes  No

## E WHAT WOULD YOU LIKE TO SEE IN YOUR NEW KITCHEN?

- More drawer space  More pantry storage  Wine rack  Plate rack
- More countertop space  Baking tray storage  Angled end-run cabinets  Decorative spindle legs
- More wall cabinet storage  A peninsula  Decorative valance  Base cabinet roll-out trays
- More base cabinet storage  An island  Glass holder  Decorative glass door
- More tray & platter storage  Corner lazy susan  Crown molding  Other \_\_\_\_\_

## F STYLE PREFERENCES

1. Which style of cabinetry do you prefer?

**OAK ISLAND**



Solid raised panel Roman Arch doors and slab drawer fronts finished in an attractive golden stain.

**COLONIAL MAPLE**



Solid raised panel Cathedral Arch doors and slab drawer fronts finished in an attractive golden stain.

**LEXINGTON**



Solid maple square raised panel doors with applied molding, matching 5-piece drawer fronts, finished in medium stain w/ dark brown glaze.

**BEACON HILL**



Solid maple square raised panel doors with applied molding, matching 5-piece drawer fronts, finished in natural stain.

**WHEATON**



Full overlay, mitered, solid maple raised panel doors with matching 5-piece drawer fronts, finished in cream with light brown glaze.

**GEORGETOWN**



Full overlay, mitered, solid maple raised panel doors with matching 5-piece drawer fronts, finished in cherry stain with brown glaze.

**STURBRIDGE**



Full overlay, solid red birch reverse-raised panel door with slab drawer fronts, finished with a light stain.

**ROCKPORT**



Full overlay, solid maple raised panel door with 5-piece matching drawer fronts, finished with a hand rubbed golden stain.

2. Which countertop material do you prefer?

- Mica Laminare  Solid Surface (Corian)  Natural Granite  Quartz  Other \_\_\_\_\_

3. Activity areas to be included in kitchen:

- Baking/mixing center  Planning Desk  Laundry area  Entertainment center
- Computer center  Wet bar  Hobby area  Telephone area
- Study area  Other \_\_\_\_\_

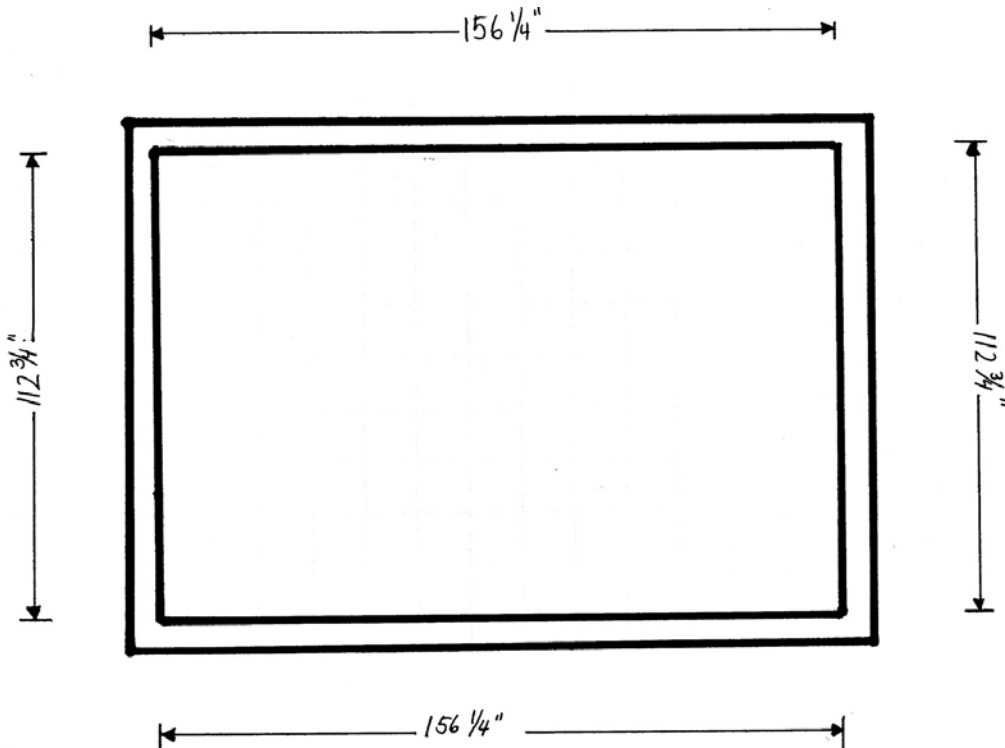


# MEASURING YOUR KITCHEN

Measuring your kitchen does not have to be a job for a professional! All you have to do is follow these simple, step-by-step instructions to obtain all the information you need to insure the trouble-free fit of your cabinetry and appliances. You'll only need the graph paper that has been provided at the end of these instructions, a pencil and a tape measure. Let's get started!

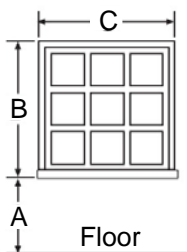
## I EXISTING WALL MEASUREMENTS

Begin by measuring the walls of your existing kitchen. You should measure all walls at approximately 36" above your finished floor for best results. Start from one corner of the room and measure to an adjacent wall. Continue to measure around the room until all walls in the project area have been measured. Record all measurements in inches. Make a drawing of your walls and add in dimensions as shown below:

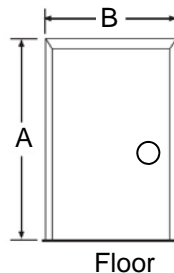


## J WINDOW & DOOR MEASUREMENTS

Next, measure each window or door in the kitchen and record their dimensions in the charts below. If the door or window includes trim, always measure from outside edge of trim to outside edge of trim. Once again, measurements are recorded in inches.



Window Measurements			
Window #	Dimension "A"	Dimension "B"	Dimension "C"
#1			
#2			
#3			
#4			

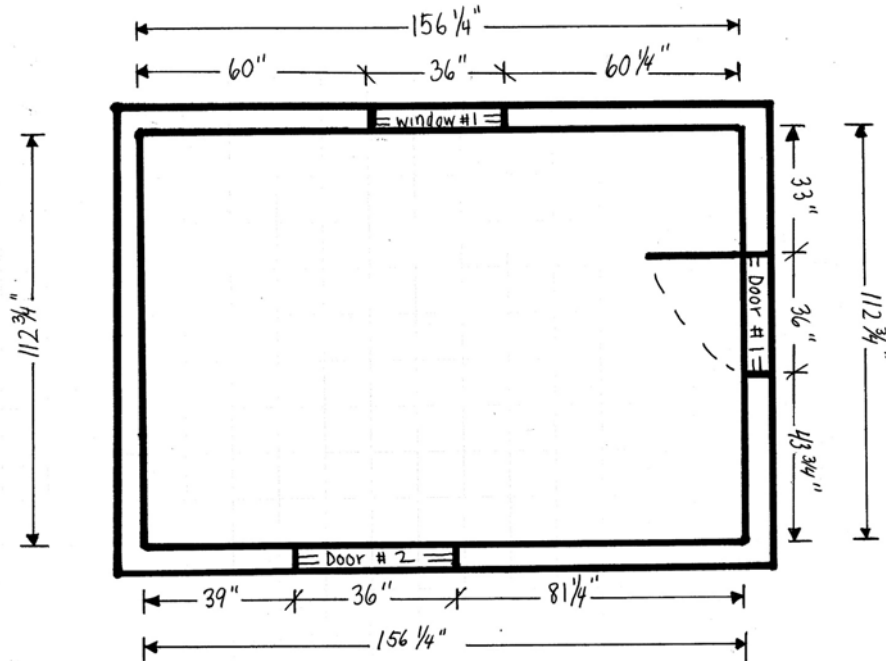


Door Measurements		
Door#	Dimension "A"	Dimension "B"
#1		
#2		
#3		
#4		

# K

## PLACE WINDOWS & DOORS ON FLOOR PLAN

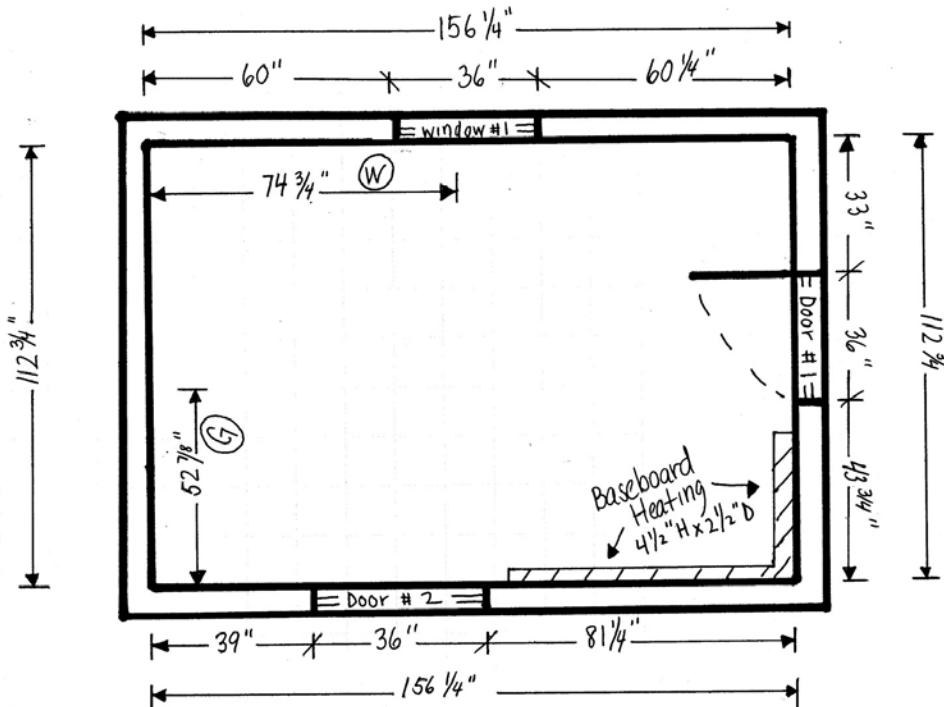
Start from the corner of any wall that contains an opening, and measure to the outside trim edges of windows and doors. Add the dimensions & locations to your drawing and identify (Window # 1, Window # 2, etc.). If applicable, specify door swing direction as shown below. Confirm all measurements are correct by totaling the wall and opening dimensions and compare to your overall wall dimensions from previous step.



# L

## PLACE UTILITIES & OBSTRUCTIONS ON FLOOR PLAN

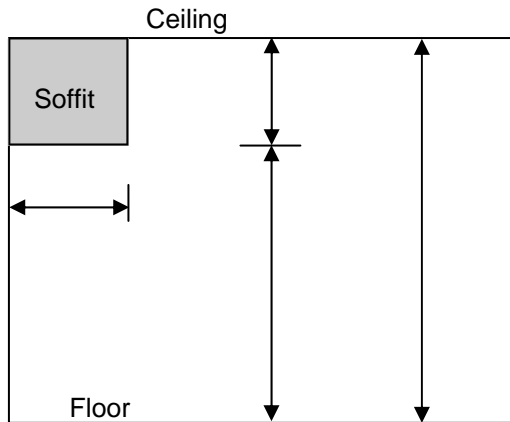
From the corner, measure the distance to the center of your plumbing waste line. Draw the measurement on your floor plan, labeled with a W as shown below. Repeat this step for gas line if applicable and label on floor plan with a G as shown. Lastly, measure and draw any additional obstructions (baseboard heat, radiator, etc.) on the floor plan, and label as shown.



# M

## SOFFIT DIMENSIONS & CEILING HEIGHTS

A soffit is the finished boxed in area above the wall cabinets in many homes. Measure from the finished floor to the finished ceiling, from the finished floor to the bottom of existing soffits, and from the finished wall to the front of the soffits and label each dimension on the diagram below. Then check the appropriate box for your expected soffit treatment.



- If No Soffits Check Here
- Set Cabinets To Existing Soffits
- Remove Existing Build New Soffits
- Remove Existing No New Soffits

# N

## SUBMISSION INSTRUCTIONS

All your work is done, and hopefully it only took minutes! Now all you have to do is send us your completed design survey (pages 1-3 of this document), your completed room measurements, and page 6 (this page) of this document (includes applicable soffit dimensions and ceiling heights)

Choose from any of the 3 submission methods below that is most convenient for you...

### E-MAIL

Design@ConsumersMail.com



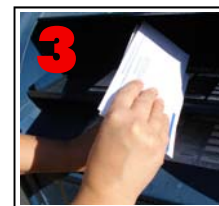
### FAX

631-563-9864



### MAIL

717 Broadway Ave. Holbrook, NY 11741



# O

## CONTACT US

If you require further assistance and would like to speak to a Cabinets Express design specialist, please call us toll free at **1-888-387-6254**. You are also welcome to stop into one of our conveniently located Kitchens & Baths or Furniture Super Centers to view the beauty and quality of our kitchen cabinetry first-hand.



#### HOLBROOK

717 Broadway Ave, NY 11741

#### COPIAGUE

1250 Sunrise Highway, NY 11726

#### FRANKLIN SQUARE

600 Franklin Ave, NY 11010

#### COMMACK

258 Commack Rd, NY 11725

#### EAST MEADOW

2280 Hempstead Tpke, East Meadow, NY 11554



#### HOLBROOK

719 Broadway Ave, NY 11741

#### COPIAGUE

1179 Sunrise Highway, NY 11726

#### FRANKLIN SQUARE

600 Franklin Ave, NY 11010



Customer Name: \_\_\_\_\_

Scale Drawing Grid (1/2" = 12"), Each square = 6"

